

PK-2809M

# 26 PCS 1000V INSULATED METRIC TOOL KIT

1000V  
IEC 60900

*Ideal for power plant, HVAC, automotive, military, aircraft field and more.*

PK-2809M tool kit equipped with a range of 26pcs 1000V insulated single open end wrenches, screwdrivers, pliers and cutters, T handle and 1/2" sockets in a durable tool box.



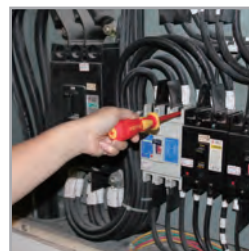
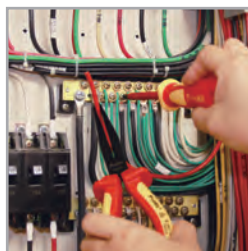
9SB-3935 Size:390x350x90 mm

Plastic tool box



## PK-2809M Contents

Insulated combination plier (195mm)
Insulated side cutter(165mm)
Insulated single open end wrench 10mm
Insulated single open end wrench 11mm
Insulated single open end wrench 12mm
Insulated single open end wrench 13mm
Insulated single open end wrench 14mm
Insulated single open end wrench 17mm
Insulated single open end wrench 19mm
⊕ SD-800-S2.5 Insulated screwdriver(-2.5x75)
⊕ SD-800-S3.0 Insulated screwdriver(-3.0x100)
⊕ SD-800-S4.0 Insulated screwdriver (-4.0x100)
⊕ SD-800-S5.5 Insulated screwdriver (-5.5x125)
⊕ SD-800-P0 Insulated screwdriver (#0x60)
⊕ SD-800-P1 Insulated screwdriver (#1x80)
⊕ SD-800-P2 Insulated screwdriver (#2x100)
Insulated 1/2" drive T handle 200mm
Insulated 1/2" drive socket 10mm
Insulated 1/2" drive socket 11mm
Insulated 1/2" drive socket 12mm
Insulated 1/2" drive socket 13mm
Insulated 1/2" drive socket 14mm
Insulated 1/2" drive socket 17mm
Insulated 1/2" drive socket 19mm
Insulated straight blade cable knife 50x180mm
Insulated hook blade cable knife 28x155mm



Picture for reference only. Please check with distributor for exact offers. All specifications are subject to change without notice.